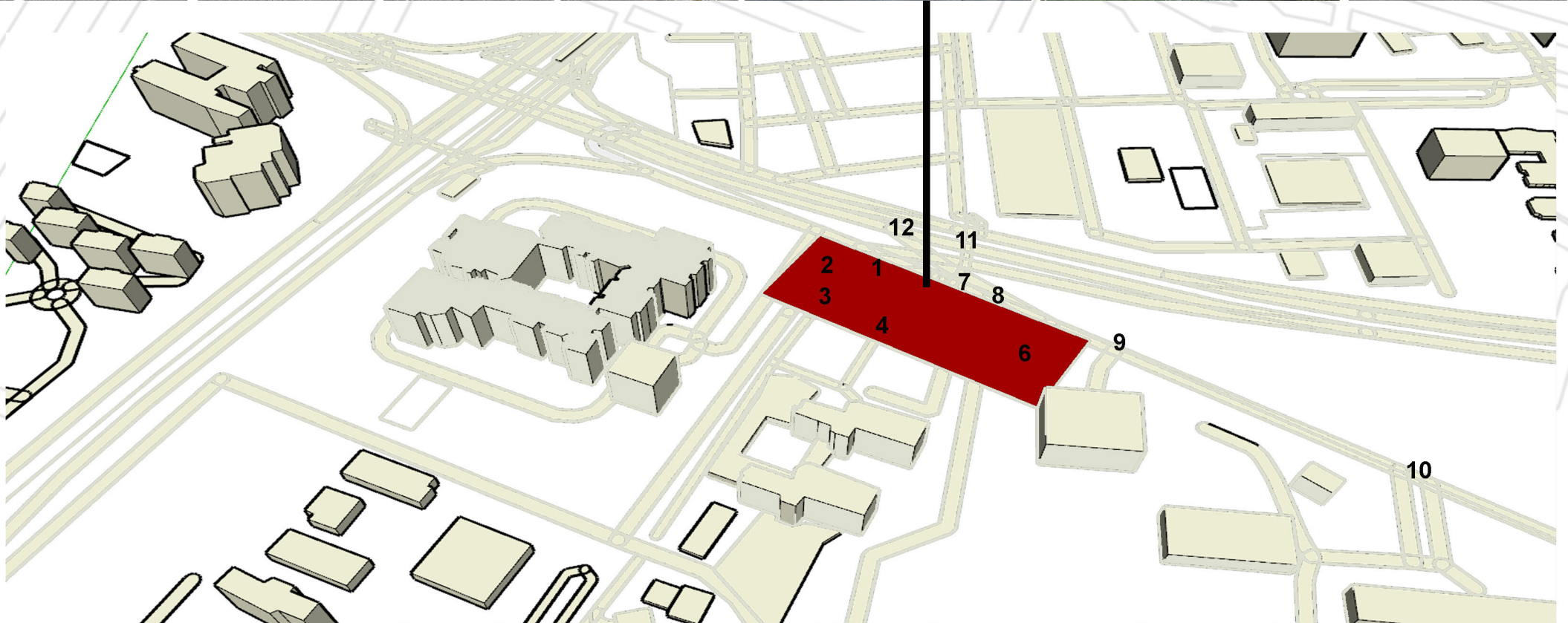
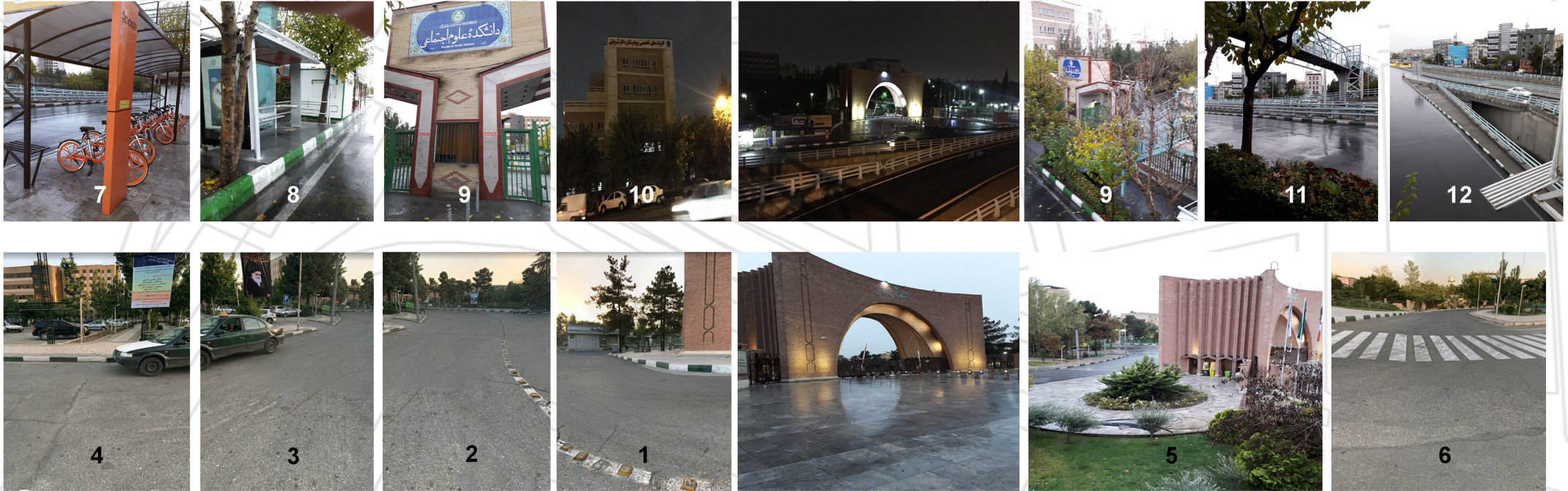


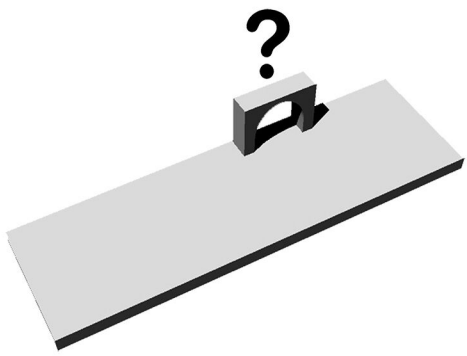
Regeneration entrance-area



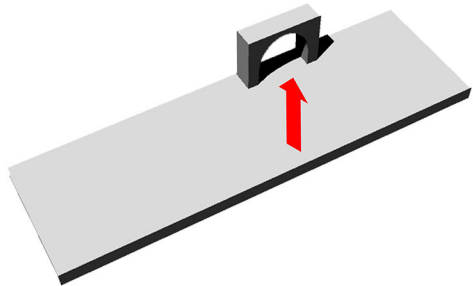
Tarbiat Modares University is a graduate university with its main campus in Tehran, Iran. This university is located in the street which possesses nightlife inactiveness phenomenon due to being far from cultural and recreation centers. Moreover, the presence of people in this area is dangerous at night, due to the high speed of cars. Therefore, the use of this area is only during the day and by students. However, its entrance-area has the ability to be designed for the active presence of people around the clock. The aim of this design is the dynamic of this area (via designing pedestrian bridge, communal and living spaces, cafe and bus station).



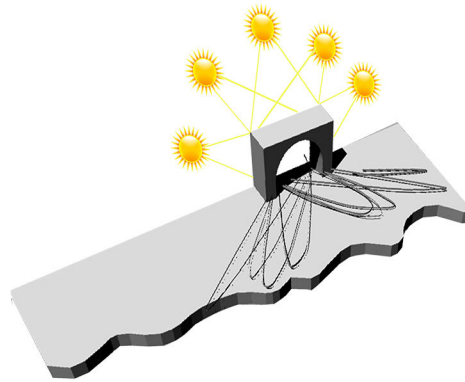
DESIGN PROCESS



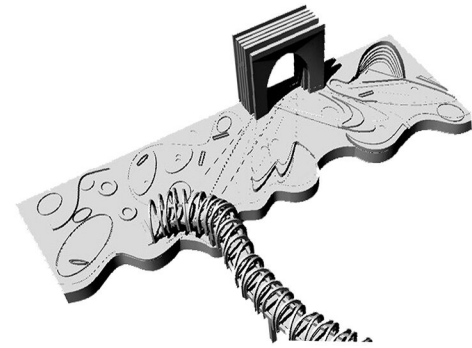
1. In the first stage, the land area was determined



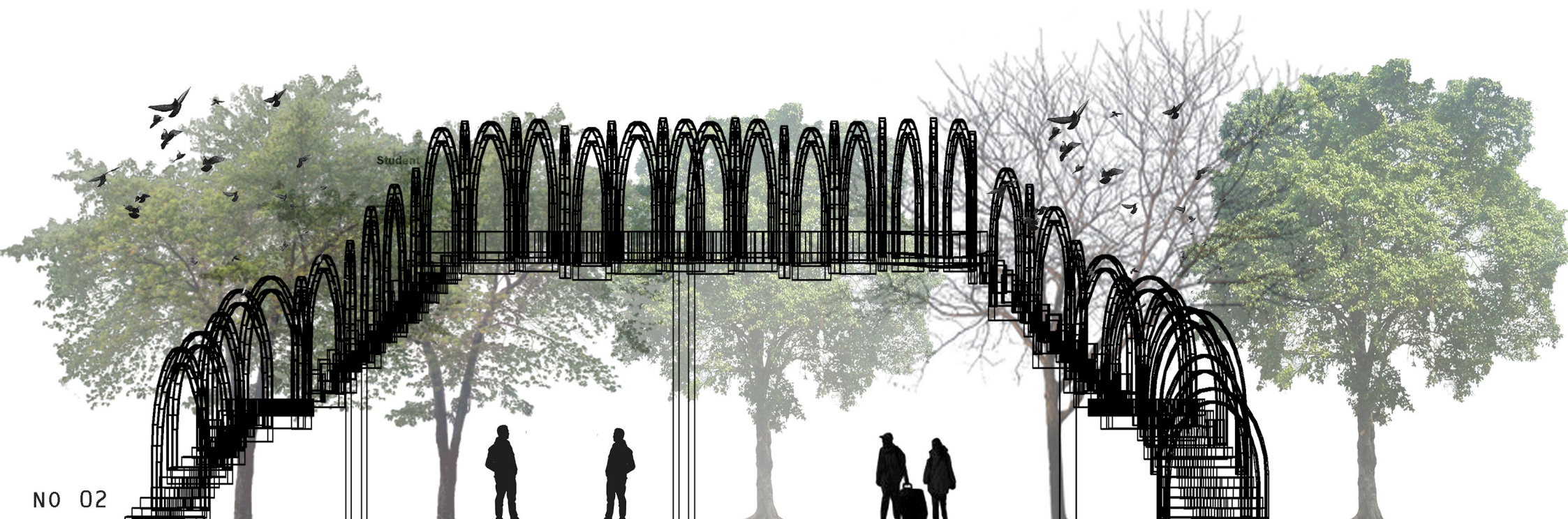
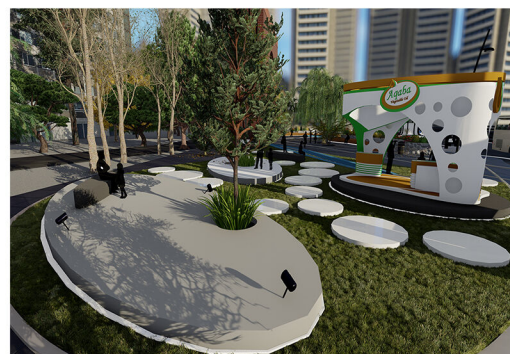
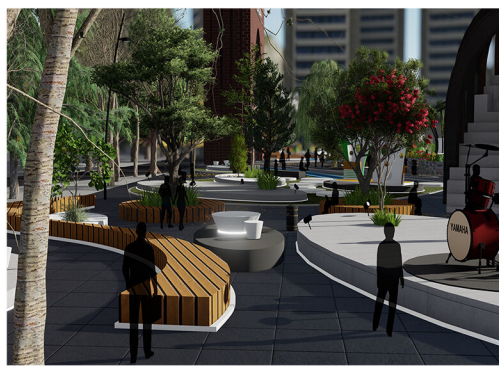
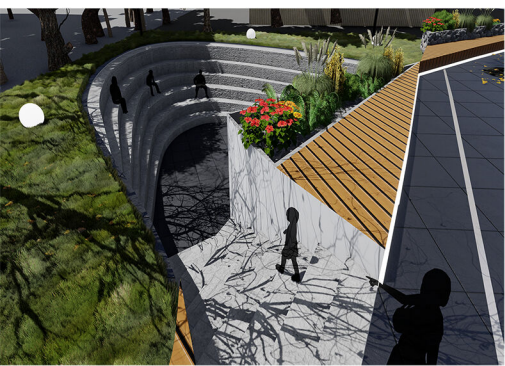
2. In the second stage, the design had to be done according to the required spaces

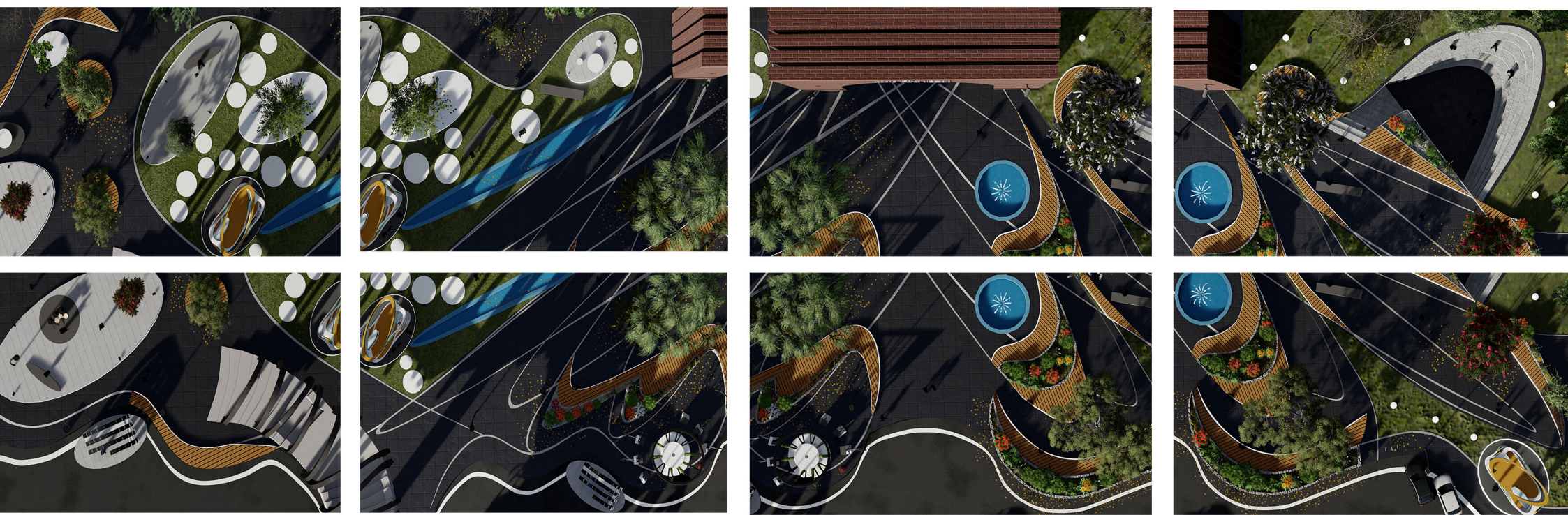


3. In the third stage, lines were obtained through the shadows of the entrance on the ground



4. In the fourth stage, the lines are connected and form paths, gardens and sitting space





Zoom in on different parts of the park

Site Users



Bicycle



Student



Coffee

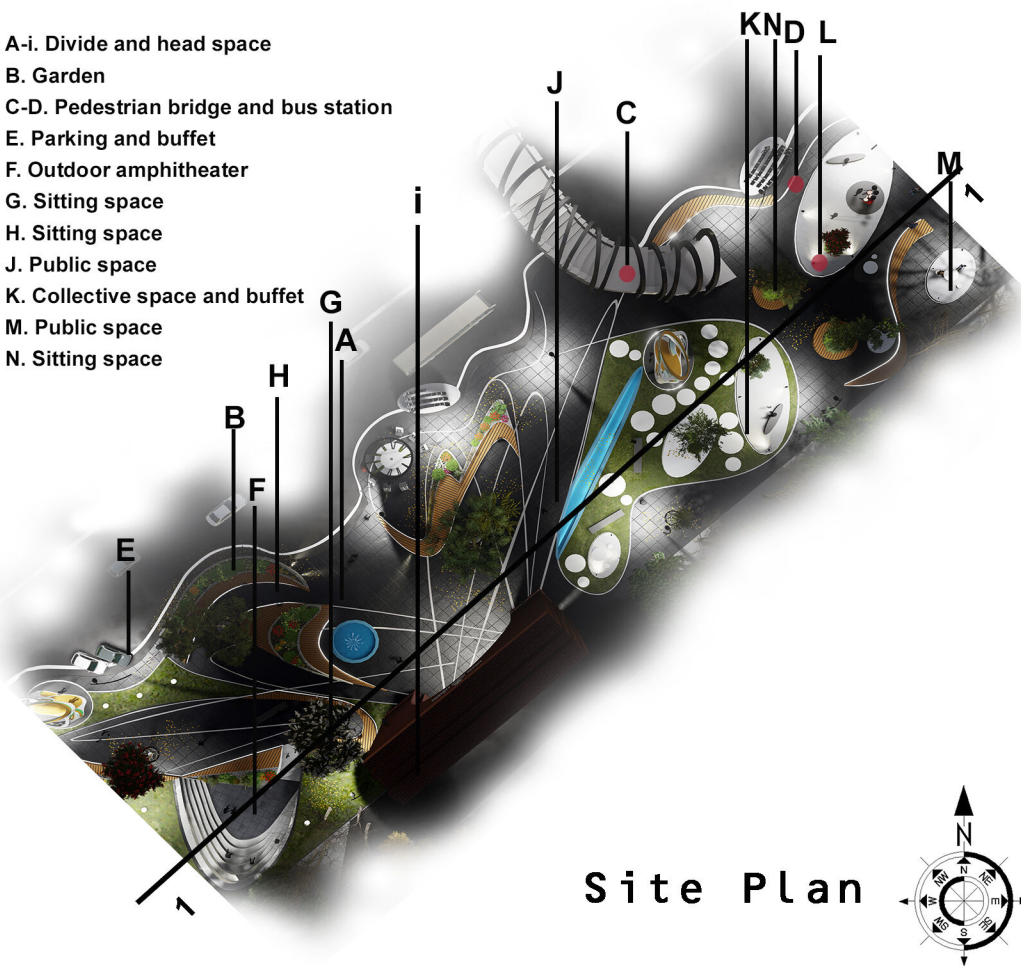


Public



Bus station

- A-i. Divide and head space
- B. Garden
- C-D. Pedestrian bridge and bus station
- E. Parking and buffet
- F. Outdoor amphitheater
- G. Sitting space
- H. Sitting space
- J. Public space
- K. Collective space and buffet
- M. Public space
- N. Sitting space



Site Plan



The aim of this design is the dynamic of this area (via designing pedestrian bridge, communal and living spaces, cafe and bus station).

ARC + LIGHT



A-I



B



C-D



E



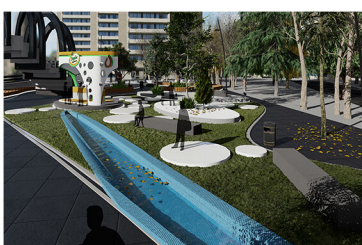
F



G



H



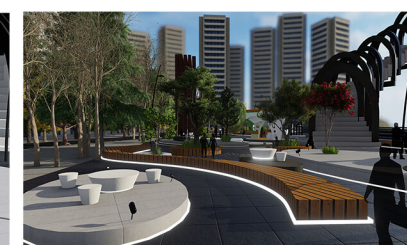
J



K



L



M



N



SECTION 1-1

SECTION 2-2

MAIN VIEW

DESIGNING THE ENTRANCE OF THE UNIVERSITY CAMPUS

SITE ANALYSIS

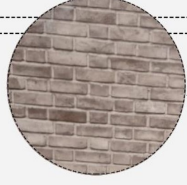
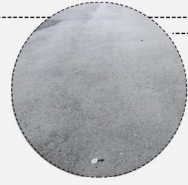
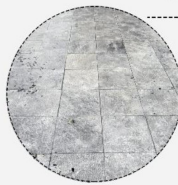
Tarbiat Modares University is one of Iran's public universities in Tehran. This university is in the neighborhood of Tehran University, Shariati Hospital and metro station.

So there is a lot of social interaction and The site needs public spaces. By designing the landscape at the entrance of the university, we tried to respond to the needs of the site with regard to the entrance, as well as the design of public spaces, flyovers, bus and bicycle stations, urban furniture and vegetation.

Looking at the past of the area and looking at the performance of the site, the parametric design approach was chosen.



Day views



Flooring

Main material



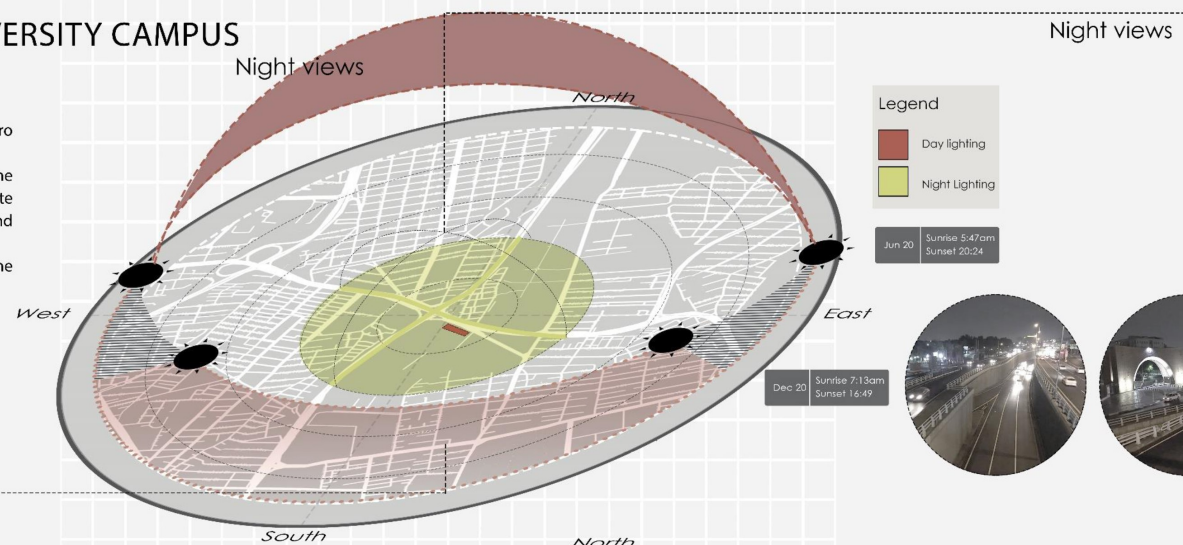
Site Plant Types



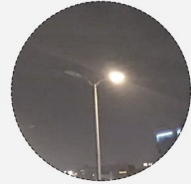
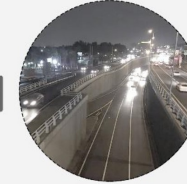
Site Views



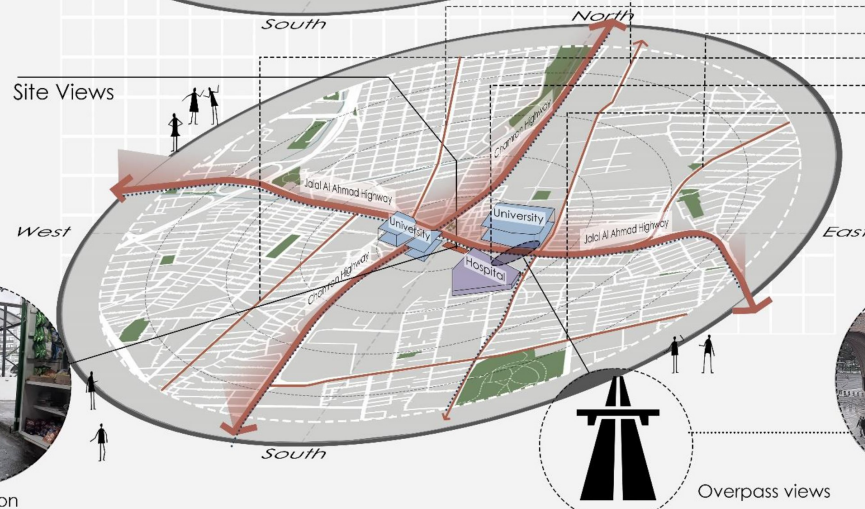
Bike Station



Night views



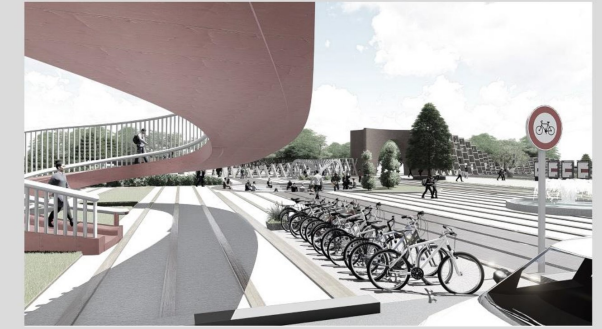
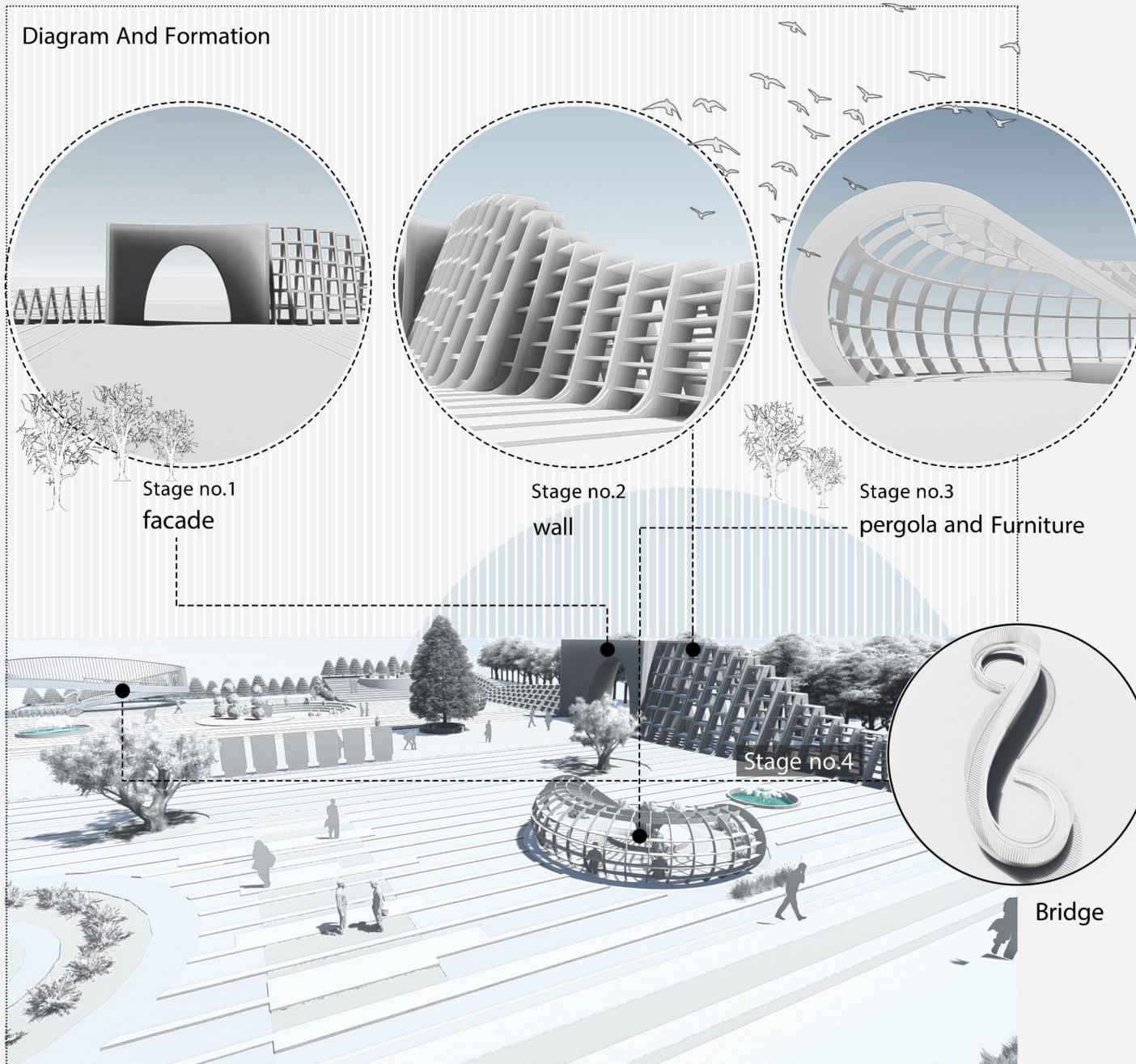
Site Furniture



Overpass views

DESIGNING THE ENTRANCE OF THE UNIVERSITY CAMPUS

Diagram And Formation



parametric Architecture or Curving Architecture

There are a few different discussing this topic, from Parametric Architecture and Parametric Design, to Parametricism.

The simple definition of parametric design is shapes and forms that have a curving nature, often similar to a parabola or other flowing forms in the shape of arcs. These forms can include the arcs of entryways, or the entire shape of the structure can be in the form of flowing curves. Good examples of these types of designs are the TWA Building and the Ingalls Rink at Yale both by Eero Saarinen. The works of Antoni Gaudi and the current day designs of Frank Gehry's Guggenheim in Bilbao Spain are other good examples of these designs. As the saying goes, an image is worth a thousand words, so below are images that show these distinct forms with curves and arcs that are atypical from the box-like, rectangular forms of most buildings.

MODARES UNIVERSITY 1 vote +1 appreciation

EVENT STUDIO: Arezoo Izadyari Aghmiuni, Sara Shahivand

The project aims to enhance the monumental entrance of *Tarbiat Modares University*, characterized by the presence of a monumental portal.

The project solves the challenging task of having to confront the monumentality of the portal by proposing an organic and clean design, in stark contrast with the pre-existing structure, effectively enhancing it.

References to the Persian garden are present also in this project.

The result highlights a comprehensive urban vision and attention to dealing with pre-existing elements of strong identity value.

Marsia Marino

The idea is quite clever, namely to design a public space between two different worlds. Between the street space of the busy Enghelab (the east-west axis dividing the north of Tehran from the south) and the semi-public space of Modares University. The square in front of the university acts as an intermediate space between the two different worlds. So in this sense, the idea of designing the in-between space between two different realities as a public space represents a true integration of inside and outside. But the design solution is very naive.

Hassan Osanloo